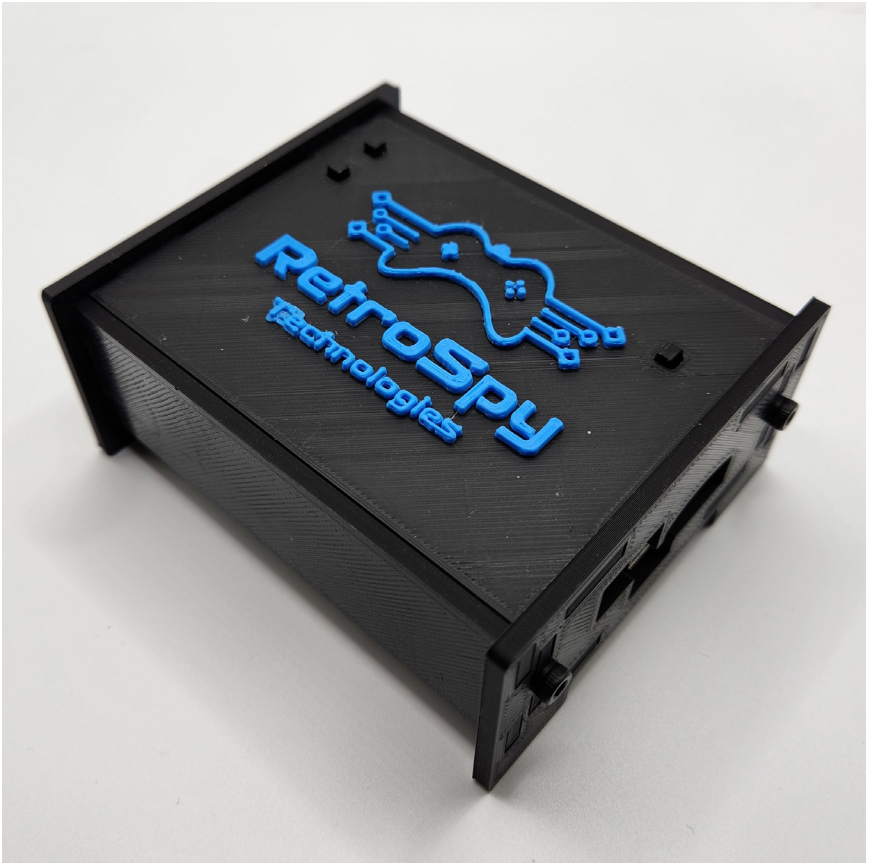




# RetroSpy Vision USB



Last Updated: 3/1/2023

# The RetroSpy Vision USB

The RetroSpy Vision USB provides input display for many video game consoles that use USB, or USB-based, input devices.

## **Supported Consoles**

- Microsoft Xbox<sup>1</sup>
- Microsoft Xbox 360
- PlayStation 3
- PlayStation 4
- Nintendo Switch<sup>2,3</sup>
- Sony PlayStation Classic
- C64 Mini
- Neo Geo Mini<sup>4</sup>
- Sega Genesis Mini 1 & 2
- NEC TurboGrafx-16 Mini
- Atari VCS
- Evercade Vs
- The A500 Mini<sup>5</sup>

---

1 Memory cards and Xbox Communicator are not currently supported for the controller being spied on. Also requires Xbox adapters.

2 The 'Y' button must be held down when powering on, or connecting, an 8BitDo SN30 Pro USB in order for it to be recognized by the Switch.

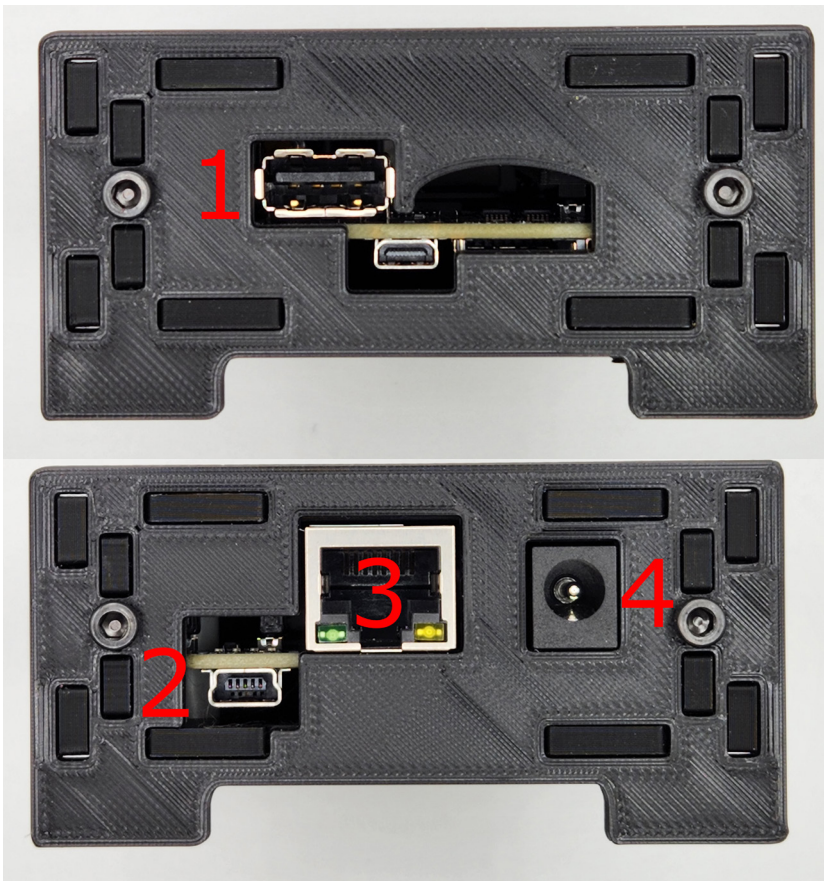
3 Wired controller communication must be enabled on the Switch, see page 6.

4 Requires USB-C adapters.

5 Spying is only supported on the controller, not the mouse.

# Hooking up the Vision USB

1. **Connect the USB controller to the Vision USB**
2. **Connect the console to the Vision USB**  
Use the included mini USB cable to connect the Vision USB's mini USB port to the console's USB port. The Vision USB might power on from the console.
3. **Connect the Vision USB to your network**
4. **Power on the Vision USB**  
Use the included 5v power supply. Plugging in the Vision USB will definitely turn it on.



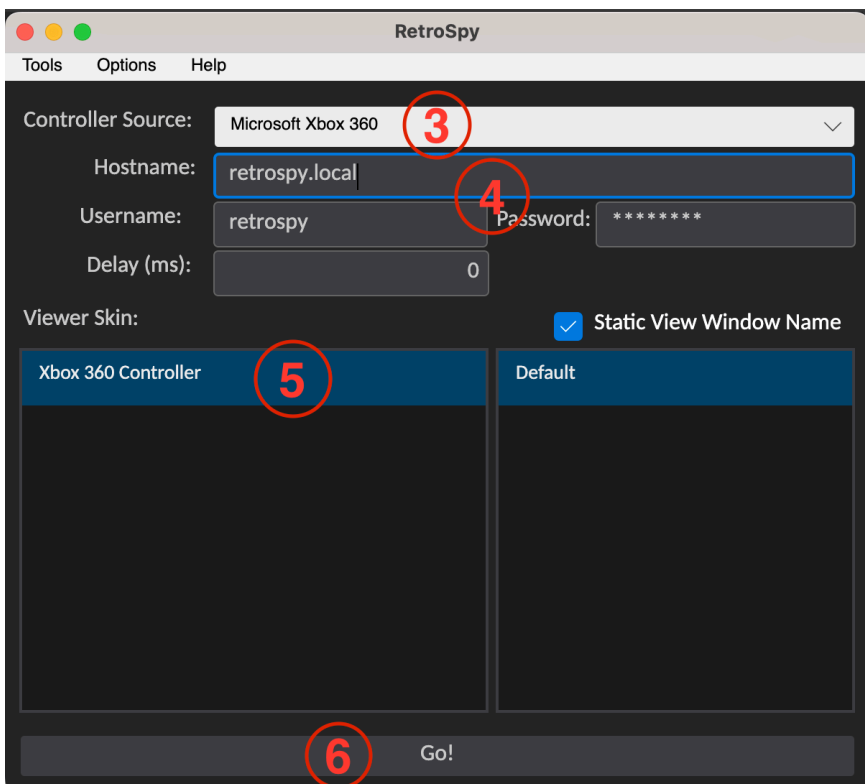
# Using the Vision USB

## 1. Download and Install the latest RetroSpy software

The latest RetroSpy software can always be found at <https://retro-spy.com/downloads/>

## 2. Run the now installed RetroSpy application

You will see the RetroSpy setup window.



## 3. Select your console in the Sources dropdown

## 4. Enter your hostname, username and password

## 5. Select a skin

## 6. Click the 'Go' button

After a few seconds the RetroSpy view window (see below) will appear and you should be able to see your inputs reflected in the view window and on your console. If the inputs are only reflected in 1 place, close the view window and try again. Sometimes it can take a few tries to get it working.



# Updating the Firmware

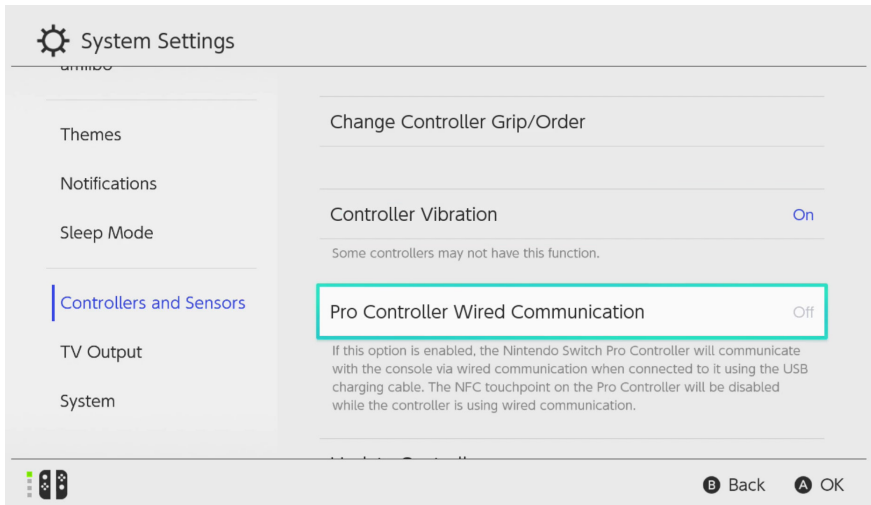
## Run the RetroSpy Vision USB Updater application

Enter your hostname, username and password then click the "Start Update" button. The updater will download all the necessary files for the upgrade and perform the upgrade automatically. Once successful, you will need to restart the Vision USB for the changes to take effect.

# Appendix

## Enabling Pro Controller Wired Communication on the Switch

1. From the HOME Menu select **System Settings**, then select **Controllers and Sensors**.
2. Select **Pro Controller Wired Communication** to enable this feature.



## Admin Username & Password

The retrospy account is very restricted in what it can do within the Vision USB's OS for security reasons, but if you need admin access to the OS, via sudo, the username and password is debian/tempPWD.



# Contact Us

If you have any problems do not hesitate to contact us for help.



[support@retro-spy.com](mailto:support@retro-spy.com)



<https://retro-spy.com/contact-us/>



[retrospydisplay](#)



<https://discord.gg/V2EHQrM>



<https://reddit.com/r/retrospy>



<https://patreon.com/retrospydisplay>